

A photograph of a sailboat on a body of water, with a glacier and mountains in the background. The sailboat's mast and rigging are visible in the foreground. The glacier is a large, blue-tinged mass of ice, and the mountains are rugged and rocky. The sky is overcast with grey clouds.

Sail

PATAGONIA

with 1275 waypoints from the best available
nautical guides for the area

By French sailor and mountaineer
Christophe Mora

Patagonia, both feared and admired, is a beauty and a beast one would never forget. Many a sailor braves the voyage through this labyrinth of channels in the short summer season, but some decide to stay – to try to tame it and see more of it. Authors of the book “Patagonia and Tierra del Fuego Nautical Guide” Mariolina Rolfo and Giorgio Ardrizzi spent over a decade exploring and documenting this area.

The secret of her

BEAUTY

is in her untouched

WILDERNESS

WPTS Patagonie.gpx



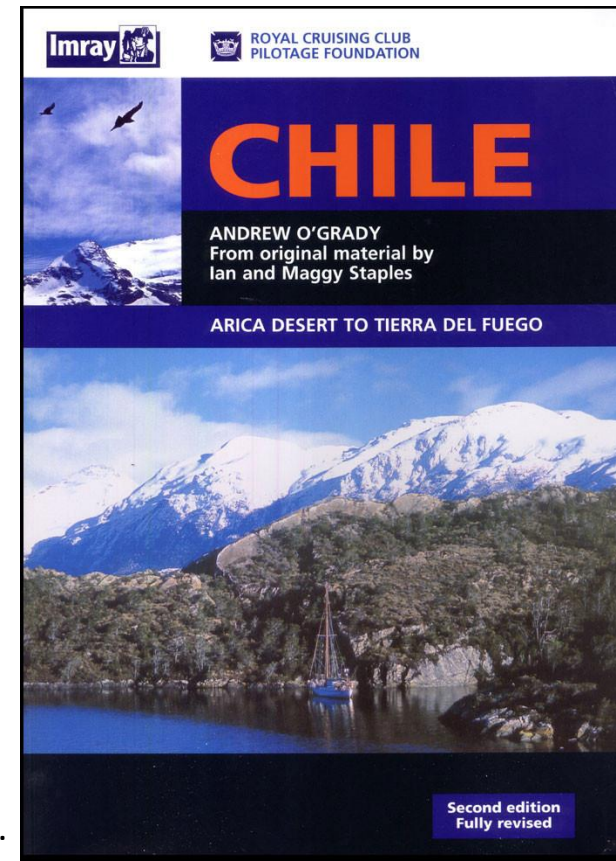
is a compilation of

1275 waypoints
in the Patagonian Channels

€35*

Sourced from the best available nautical guides for the area, this navigation aid is a complement to these two books and meant to be used hand-in-hand with both or either of:

- Patagonia & Tierra del Fuego Nautical Guide, by Mariolina Rolfo and Giorgio Ardrizzi
- RCC Chile Cruising Guide, by Andrew O'Grady, from Imray



* Price includes WPTS Patagonie.gpx waypoints file. Price does not include the books.



The
STORY

Christophe Mora and Carina Juhhova spent a year in Patagonia sailing their 25-footer, SY L'Envol, through the immense network of channels in 2015.

*With the weather sometimes changing too quickly to look for a Plan B in the books, the couple soon learned that what they rather needed was a visual of all their options on the computer screen. This is how the WPTS Patagonie.gpx file was born. **This file of 1275 aids to navigation and anchorage waypoints is for sale here for €35.***

Although the crew of SY L'Envol took more time than many others to sail from Puerto Williams to Puerto Montt, in the end they counted only about 100 anchorages - not even a quarter of all the options!


SY L'Envol's track and anchorages in Patagonia are FREE to download on the ship's blog:

www.intothewind.fr/au-revoir-patagonie/



Ability to make good decisions can be a life-saver when the weather deteriorates and the sheltered bay, one thought to be perfect to pass the storm, is covered in ice. Then you quickly need a

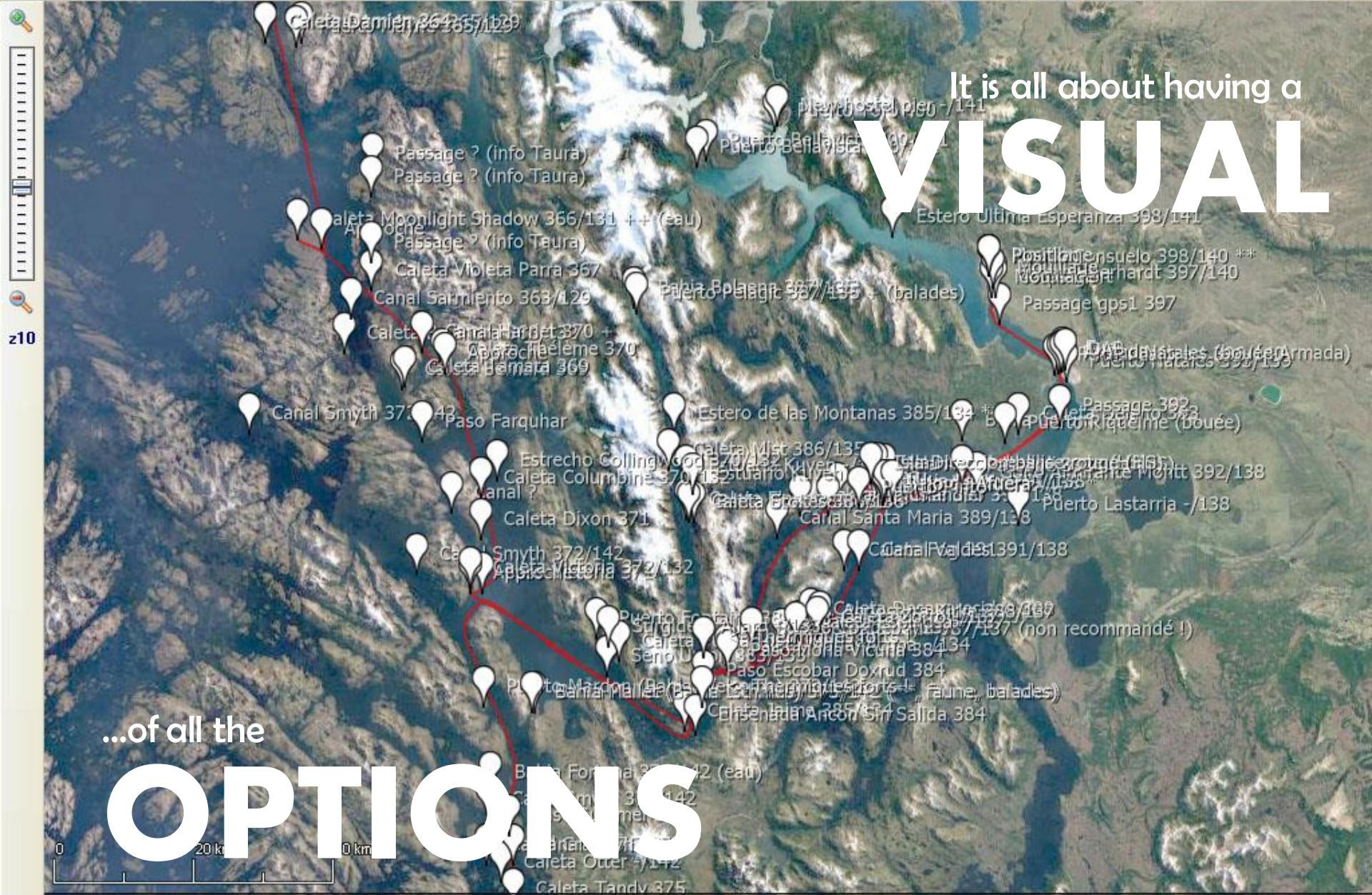
PLAN B



Find your

SHELTER

at a glance with [WPTS Patagonie.gpx](#)



It is all about having a
VISUAL

...of all the
OPTIONS



HOW TO

use this `.gpx` file to get the most out of it with OpenCPN



Waypoint name = cove name X/Y

X = page number of the book Patagonia & Tierra del Fuego - 2nd Edition*

Y = page number of the book RCC Chile Cruising Guide (Imray) - 2nd Edition*

In case of « - » no information was given in one or the other book

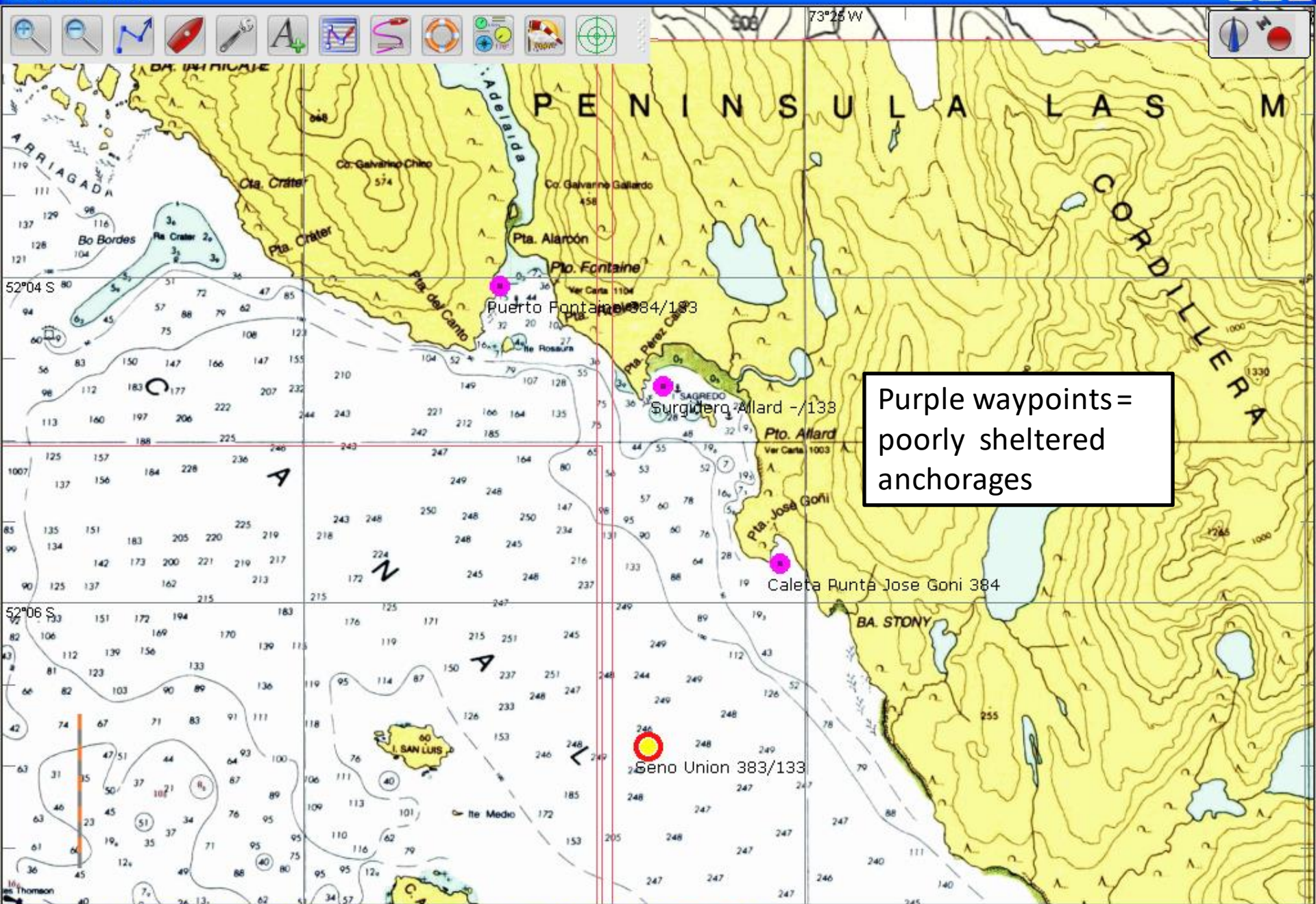


For example:

Caleta Jaime 385/134

* If you are using a different edition, page numbers might not match, in which case search in INDEX of the book by place name.

Some waypoint names may also include words in French, like « eau » for water or « balades » for walks



Purple waypoints =
poorly sheltered
anchorages



Zoom excessif.

Red&yellow waypoints = well sheltered anchorages

Eau (à marée basse)

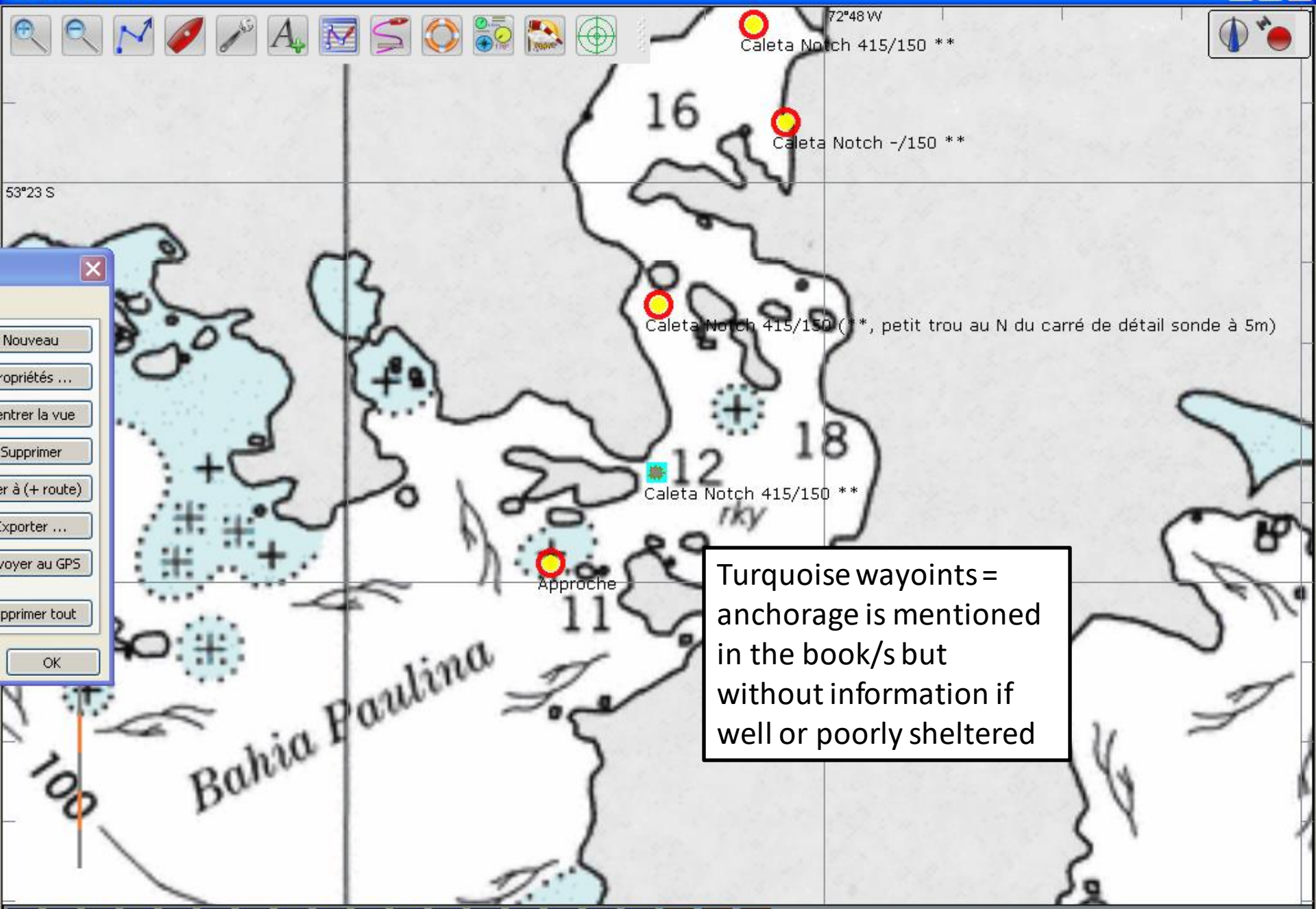
Caleta Dardé (si tendance N)

Caleta Dardé 376/143 **

52°28.60

52°28.80





Turquoise waypoints = anchorage is mentioned in the book/s but without information if well or poorly sheltered



Zoom excessif.

« + » means better protection
 For example « ++ » means that the anchorage is very well sheltered

« * » is an indicator of beauty
 For example « ** » means that the anchorage is a must see

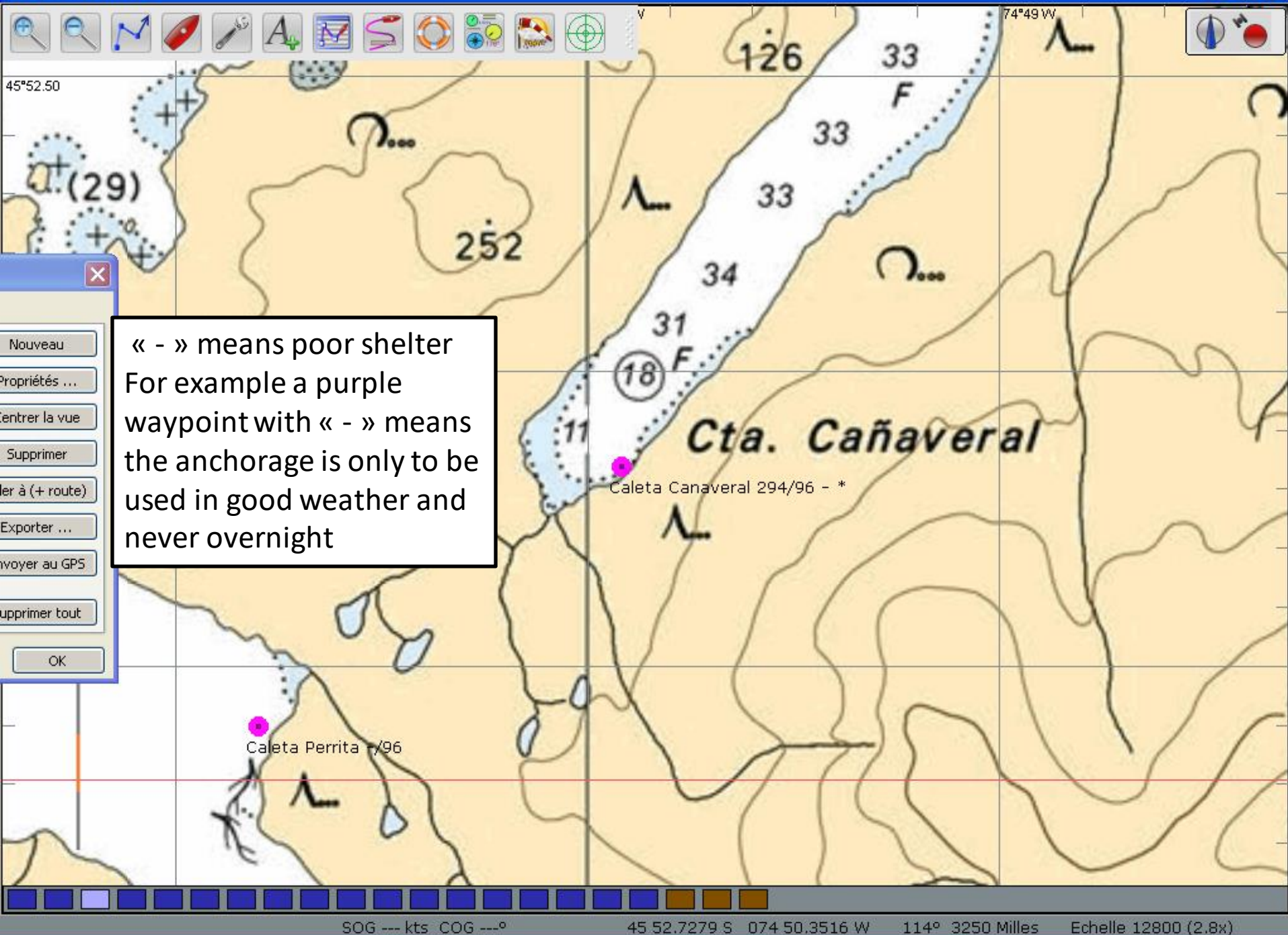
Bahia Hugh -/123

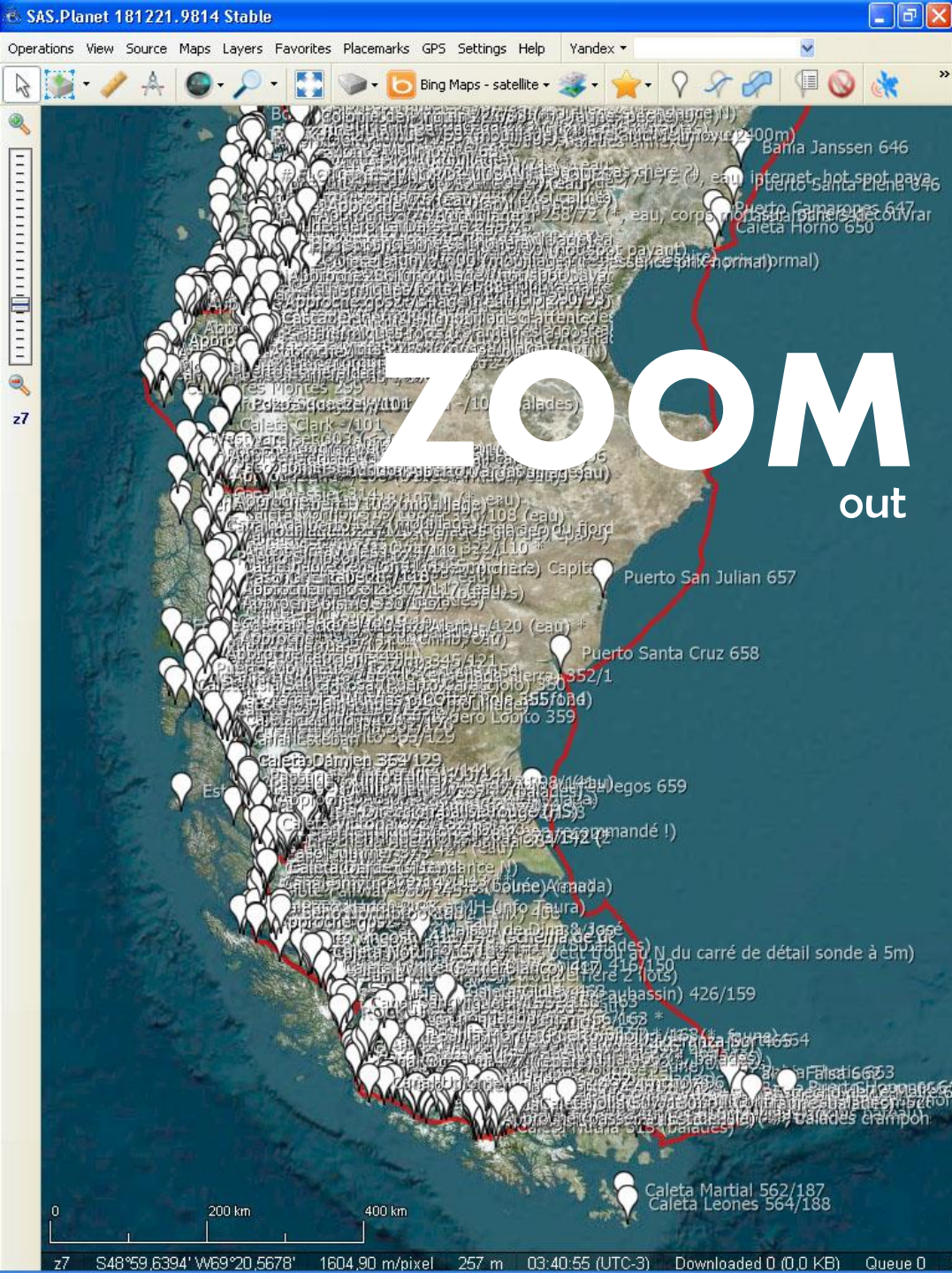
Bahia Hugh 346 ++ *

50°24.50

74°45 W







The WPTS Patagonie.gpx file can be used with any nautical software which can open the common .gpx file format.

However, the colour-code of the waypoints will only be visible in OpenCPN – the program in which the file was created.



This is what the cloud of 1275 waypoints would look like in SASPlanet.



ZOOM
in...

Caleta Elena 340/119
Caleta Nassibal 340/119
Caleta Sandy -/119
Caleta Sandy -/119
Caleta Isla Rosa 340/119
Caleta Greenpeace 341

LENVO
Caleta Shinda, isla Wellington
Caleta Refugio -/120 (balades)
Canal Wide 339/119 (ICE !!)
Approche
<- ICE !!

Approche
Stero Dock 342/120 (climb, eau)

<- ICE !!

0 5000 m 10000 m
Puerto Charhua 343/121 *
Caleta Alicia 343/121 *



...to discover

YOUR_{safe}HAVEN

ORDER

your set of 1275 navigation aids
and anchorage waypoints
WPTS Patagonie.gpx here:

www.intothewind.fr/category/shop/

for

€35

...and don't feel lost in

PATAGONIA

For additional information
contact Christophe and Carina:
intothewind@gmx.com

ABOUT

Christophe and Carina



*In 2014 **Christophe Mora**, French mountaineer and sailor, single-handed his 7.7 metre ship SY L'Envol to Puerto Williams in Chile. Today, with a 9-year circumnavigation behind him, Patagonia remains his favourite part of the world. He hopes this work helps other sailors discover the precious gem of the Chilean waterways.*

***Carina Juhhova**, Estonian traveller, was Head of Tourism of Cape Horn, living and working in Puerto Williams from 2012-2015. After meeting Christophe she abandoned the “advised route” to pursue a life of adventure and togetherness aboard SY L'Envol. She has encouraged Christophe to make the study he put into planning their voyage through Patagonia available to others.*

By purchasing this product you support Christophe and Carina's sailing project. Their blog is: www.intothewind.fr



Download
FREE
GPS
TRACKS

of SY L'Envol

These are low resolution GPS tracks + anchorage waypoints of SY L'Envol, and are to be used at your own risk.

Please consider that our boat draws only 1.2 m.

Avoid hitting the rocks we did on our way:

▶ GPS 54 0.79 S 72 19.1 W
Give this point at least 100m berth to the east!

▶ GPS 41 59.23 S 72 27.53 W

You will be able to download these .gpx files here:

www.intothewind.fr/au-revoir-patagonie/